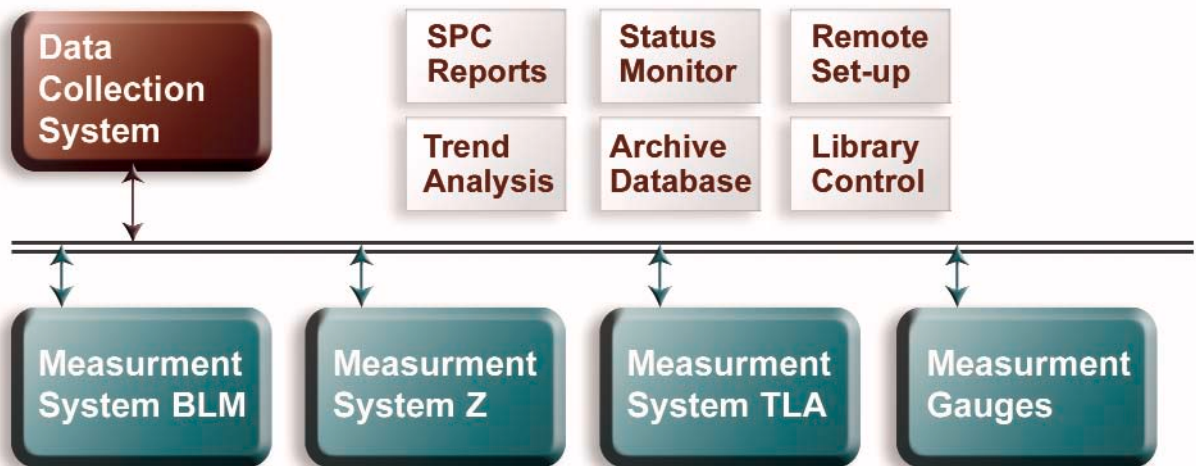


MetriLink/Multi - Data Collection System

Gathers product data from optical measurement gauges and provides a wide range of analytical and reporting tools.



Production Management

- View the entire manufacturing operation with one overview
- Control and manage all measurement systems by remote
- Download recipes automatically
- Review data, scrap, and uptime/downtime reports



Process Engineering

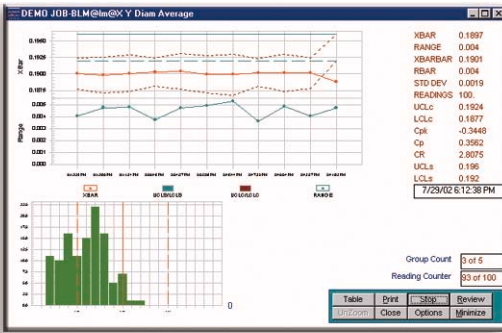
- Compare results to events to identify/locate problem areas
- Compare process settings to product results



Quality Control

- Archive SPC report data for subsequent retrieval
- Export data to other analytical programs
- Prepare customer-ready quality control reports

MetriLink/Multi - Data Collection System



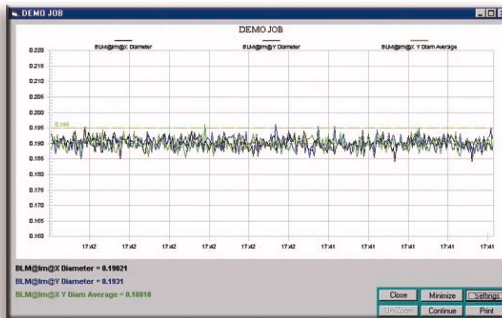
SPC Analysis

Complete SPC control charts and reports

Create unlimited SPC reporting windows for any dimension, on any device, on any line. Macro utilities allow for simple set-up of repeated products.

Print graphic reports on a time, length, or end-of-reel basis. Store reports to a database (MS Access) with utilities for exporting data to other network applications.

Archive all SPC data for review.



Trend Monitor

A clear picture of product and process over time

Create an unlimited number of trend charts to track each dimension over time. Attach up to eight dimensions per chart to display multiple-axis measurements or to simultaneously view dimensions from several gauges.

Trend charts can contain thousands of data points for viewing, yielding a long presentation. A unique zoom feature enables drilling down to view specific data points or time regions.

For coiling operations, dimensions can be presented relative to footage instead of time.

Trend charts can be printed or transmitted via an e-mail-ready graphics file.

EDIT PARAMETER TABLE

newlibname

Quality Upper Warn Tol

| | |
|-----------------------------|---|
| Inside Diam Lower Warn Tol | 0 |
| Inside Diam Lower Spec Tol | 0 |
| Ovality Upper Spec Tol | 0 |
| Ovality Upper Warn Tol | 0 |
| Ovality Upper Nominal | 0 |
| Ovality Lower Warn Tol | 0 |
| Ovality Lower Spec Tol | 0 |
| Wall Upper Spec Tol | 0 |
| Wall Upper Warn Tol | 0 |
| Wall Nominal | 0 |
| Wall Lower Warn Tol | 0 |
| Wall Lower Spec Tol | 0 |
| Essentiality Upper Spec Tol | 0 |

std

Library Control

Error-free parameter control

Interface with measurement systems that have specialized processors for display and control – many with numerous parameters that must be set for each production run.

Eliminate manual entry (and operator error) of these parameters. Instead, save and download parameters directly into the processor on demand.

Upload and edit libraries to MetriLink for complete parameter control.

DOWNLOAD

Type: 6002

Library Names:

- newlibname
- newlibname2
- newlibname1
- newlibnamey

Download Set Device

Status Monitor

Status monitor window displays the status of each dimension.

Supervisors can view the entire production floor to immediately determine how each product is running.

| Schema | Data Item | Value | Message |
|---------|---------------------|---------|---------------------|
| BLM | Im@X Diameter | .1888 | UPPER WARNING LIMIT |
| BLM | Im@Y Diameter | 0.18973 | IN SPECIFICATION |
| BLM | Im@X Y Diam Average | .1886 | UPPER WARNING LIMIT |
| BLM | Im@Length Count | 16845.4 | IN SPECIFICATION |
| Charter | zumb@CURRENT LENGTH | 16814.6 | IN SPECIFICATION |
| Charter | zumb@LINE SPEED | 22.5 | IN SPECIFICATION |
| Charter | zumb@MEASURED VALUE | 1.95499 | LOWER REJECT LIMIT |

SPC EXPORT

Job Name: 31437R10
Item Name: BLM@Im@X Diameter

Date/Time Range: From 7/1/2002 12:00:00 To 7/25/02 5:53:37 PM

Export to: \\archive\line 3

Export Format: SPREADSHEET

Archive Database

Transfer data to other applications such as Excel (or specialized data analysis programs) via Export Control.

Export Wizard isolates specific SPC or process data and then reformats and outputs data to any location on the network.

A wide range of gauges and measurement systems can be attached.

Lasermike

Data Pro
900, 1000, 2000 Series
182, 192 Series
Benchmike (183 and 283)
Intellipak

Beta

CI 1000
CI 900
Accuscan Scanners (direct)

TLA

PC Boards

Keyence

Most models

Harrel

DigiPanel

Zumbach

USYS 5000
USYS 1000
USYS 100
Smart Scanners

TSI

5000
4000
LMS

Generic

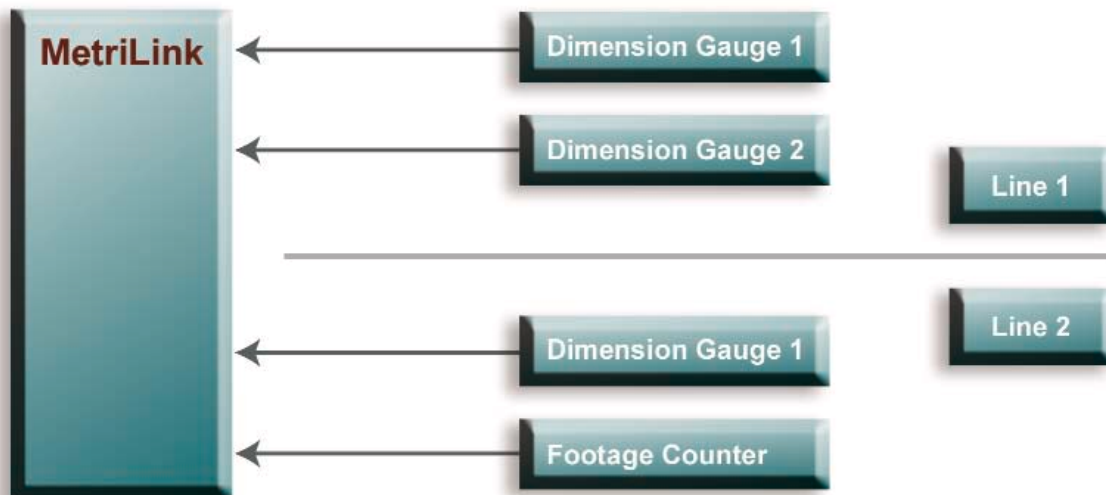
Digital, analog and counter modules

Mutitoyo

Most instruments

Combine gauges for advanced measurement

Attach multiple gauges per line, including, for example, a simple smart scanner for cross-sectional dimensions and a second simple counter interface for footage and line speed. Or combine two single-axis scanners for dual-axis measurements.

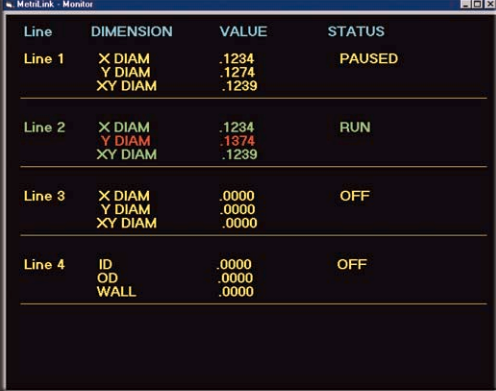


MetriLink/Multi - Data Collection System

Network Monitor

Monitor production rates and product dimensions from your desk. This application, which can reside on any computer on the network, displays the status and dimensions of each connected production line.

Keep this window on the task bar and expand it to monitor all of the connected process lines. If run on several computers simultaneously, the process can be monitored from any location.



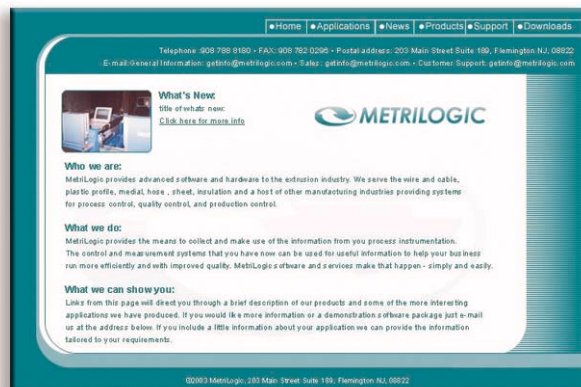
| Line | DIMENSION | VALUE | STATUS |
|--------|-----------|-------|--------|
| Line 1 | X DIAM | .1234 | PAUSED |
| | Y DIAM | .1274 | |
| | XY DIAM | .1239 | |
| Line 2 | X DIAM | .1234 | RUN |
| | Y DIAM | .1374 | |
| | XY DIAM | .1239 | |
| Line 3 | X DIAM | .0000 | OFF |
| | Y DIAM | .0000 | |
| | XY DIAM | .0000 | |
| Line 4 | ID | .0000 | OFF |
| | OD | .0000 | |
| | WALL | .0000 | |

Packaged Systems

- MetriLink works with virtually every plant-wide personal computer network.
- Complete packages – including software, computer, and networking components – can be customized to suit virtually every application.
- Each system is preconfigured and pre-tested before delivery, so that it is ready for immediate use with a minimal amount of training.
- Training packages are available for on-site, all-shift training.
- If necessary, MetriLogic can subcontract the serial cable wiring.

System Requirements

- Windows 98SE
- Windows 2000
- Windows NT4 (SP6 or later) OS
- PIII
- 64MB
- Minimum 100MB drive space



www.metrilogic.com

203 Main Street Suite 189, Flemington NJ, 08822

Tel: 908.788.8180 • Fax: 908.782.0296

E-mail: getinfo@metrilogic.com

