

MetriLink.IS - Process Management

A total data collection and display solution for continuous manufacturing processes including plastic and rubber extrusion, cable insulating and jacketing, bare wire processing, steel tubing and bar.

Optimize your Process

Be able to archive all of the process's running conditions and compare with the product quality results. Identify the root cause of quality problems. Be able to document process improvements.

Reduce Scrap

Keep a tight control on the product quality and monitor both the product and the process. Alarms on process variables alert for deviations in the running conditions so that corrections can be made prior to the process losing control and creating scrap.

Reduce Labor

Automated SPC and data collection and archiving. Automatically move data directly from the plant floor into client databases. Production and Tag reports are automatic.

Maintain Quality

Built in SPC tools create real time quality displays and complete customer ready quality reports. All reports and quality data is permanently stored. An alarm system alerts the operator when any deviation from tolerances occurs.

Increase throughput

Reduced scrap means more machine utilization. A complete on board production control system provides up to the moment production status for a clear production picture.

- Data collection is automatic. Operator interface is minimal. This ensures consistency and accuracy of the data while freeing the operator to attend to the first concern: manufacturing the product.
- MetriLink.IS interfaces with a wide range of measurement and control devices, using sensors and optical systems already in place. MetriLink is the perfect solution to upgrading existing measurement systems that work well but lack the features today's manufacturers need.

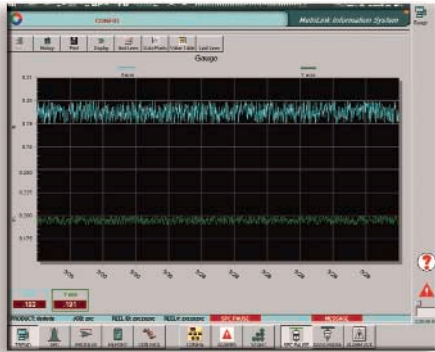


All this in one complete package that can be installed in days and that provides immediate results!

MetriLink.IS - Process Management

Software Features ...

Displays - Data collected from the on-line gauging system and a wide range of process variable interfaces provide a complete picture of product quality and process conditions.



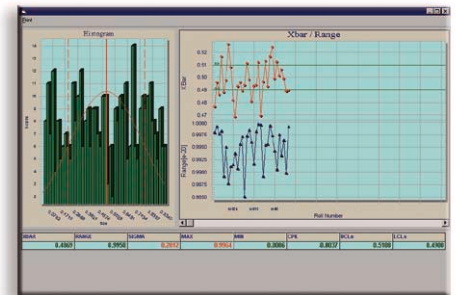
Trend Displays

Multiple concurrent values can be display on each Trend screen. Displayed data is held in a buffer for several hours. Then operator switches to History Mode to review saved data, while continuing to collect data in real time. Unlimited user-defined trend displays.

Variable	Value	Specification	Status
Moist	0.0000	-0.3000	In Specification
Voids	0.0000	-0.3000	In Specification
Aug	0.0000	-0.3000	In Specification
Surf Defect	0.0000	-0.3000	In Specification
Zone1	0.0000	-0.3000	In Specification
Zone2	0.0000	-0.3000	In Specification
Zone3	0.0000	-0.3000	In Specification
Temp	0.0000	-0.3000	In Specification
Mel Temp	0.0000	-0.3000	In Specification
Surface Defect	0.0000	-0.3000	In Specification

SPC

The operator presets a batch quantity to produce SPC Xbar and range calculations when each batch of data is collected. A histogram displays the distribution of values for the batch. The operator can run SPC specifications, if necessary. SPC displays are unlimited.



Alarm System

All measurements can be configured with alarms for on-screen displays, logging to a database and reports. A hardware board provides contacts that activate a physical alarm.

Process Monitoring

Process conditions can be monitored, displayed, and alarmed. The operator observes process condition changes and takes appropriate action, if necessary, well in advance of a problem.

Process values and product measurements are saved for postproduction analysis and troubleshooting.



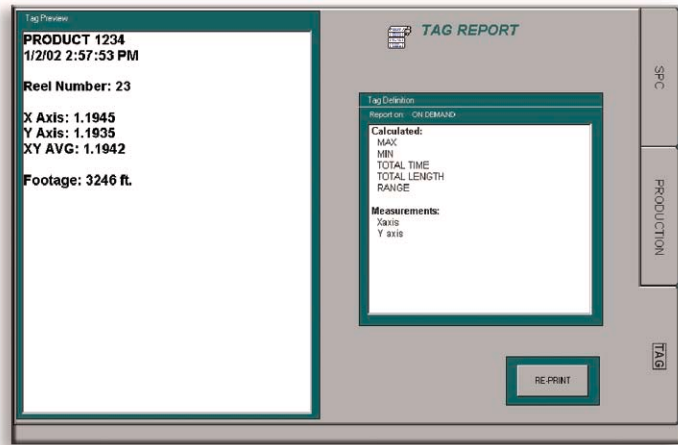
Current Prod	Current Job	Current Shift
Current Shift		
Shift Number	1	Weight per Foot
Operator	101	Trial Weight
Job Name	10000101	Avg Weight
Product ID	10000101	Avg Weight
Line ID	10000101	Trial Filter Size (in)
Run Time	4:00:00 AM	Run Material
Prod Time	4:00:00 PM	Prod Material
Length	0.00	Prod Material
Production Time	00:00	Trial Passes
Average Speed	0.00	Prod Passes
Run Rate	0.00	Line Closure
Time to Run	00:00	Production Rate
Out of Spec (Total)	00:15	Prod Rate
Length in Spec	75.7	Trial Rate
Out of Spec (Prod)	00:00	
Production Time	00:00	
Trial Run Time	00:15	
Trial Time	00:15	
Trial Run Range	0.00	
Trial Run Range	0.00	
% Run Time	100.00	
Prod Time	00:00	
Prod Weight	0.00	
Prod Weight	0.00	
Prod Time	00:00	

Production Monitoring

- Scrap analysis
- Shift status
- Uptime/downtime analysis
- Job status
- Material usage

MetriLink.IS is an integrated software package that combines production, quality, and process data for a total picture of your manufacturing operations in real time.

Reporting and analysis - Reel tag, SPC graphs, and custom reports are immediately available. Issue tag reports for each reel produced, finished reports periodically, and customized reports at the end of each shop order.

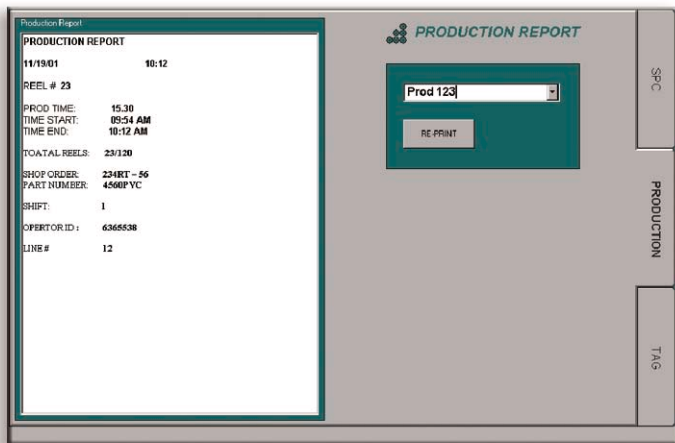
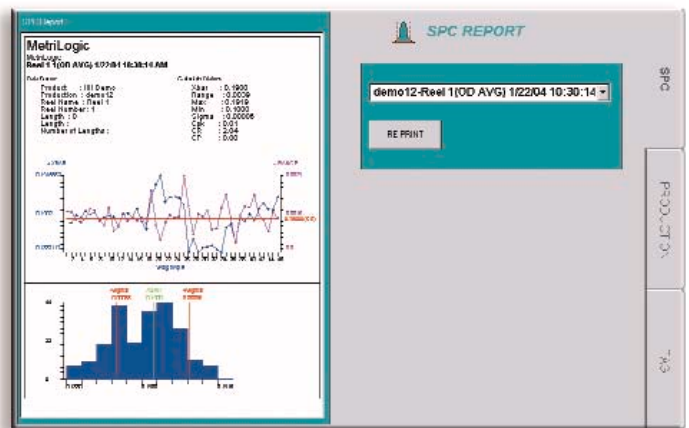


Tag Reports

Tags can be printed at the end of each production reel or batch. Routing and production data can be printed with a list of flaws and their locations for re-reeling operations.

SPC Reports

SPC reports are produced at the end of selectable period, are archived, and reprinted on the production floor, or at a later date. All SPC reports are permanently archived and can be reprinted on demand.

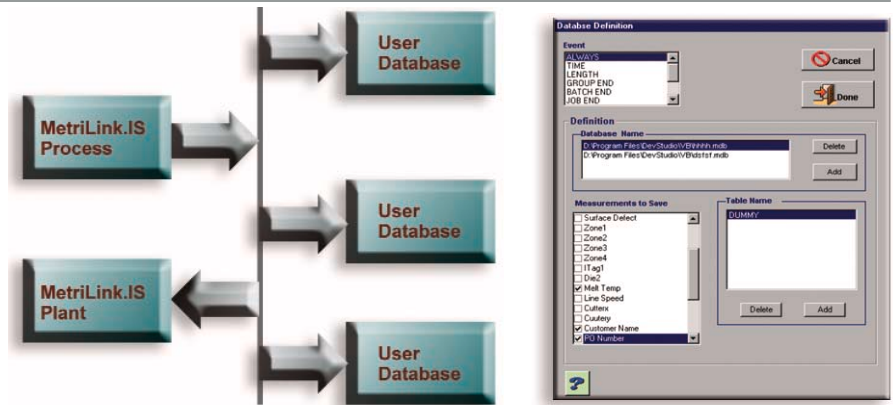


Production Reports

Production reports, using actual and computed data, are produced and printed at user-defined intervals or user-defined events, such as the end of a shop order, shift, day, or week, or on demand. Reports are archived and can be printed on-line or from MetriLink Plant Supervisor software.

MetriLink.IS - Process Management

Data Collection - Quickly transporting data from the production floor to other applications is essential. The system's powerful connectivity provides data transmission to a wide range of applications, including MetriLink.IS Plant Supervisor software.



Advanced Features ...

Operator Set-up Instructions - Set-up forms are held in a central database to be called up each time the product style is run. Set-up data are archived, so there is a record of the entire process.

Operator Information Forms - The system eliminates paperwork. Collect data on-line to incorporate with product and process data that are being archived for subsequent distribution. Create user-defined forms to correlate with existing reporting systems.

Hardware Interface - The system provides a direct-contact electronic interface to the process for end-of-reel, print-on-demand, and other user-defined events integrated into program operation.

Gauge and Device Interfaces

Product: Measurement devices from all of the major manufacturers, including the PC-card-based devices.

Process: Drivers for temperature-control devices, counter devices, and OPTO (and compatible) devices. Analog and digital I/O cards are available for direct PC connection.



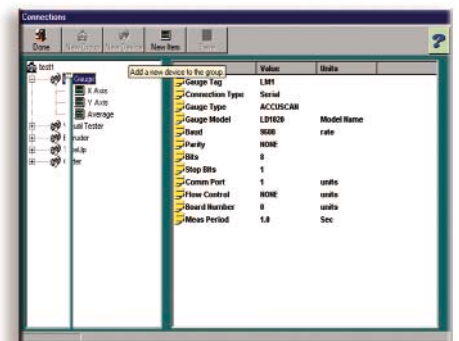
Packaged Systems - Complete packages are available: computer, hardware, interface cards, and I/O boards can be installed with the software. MetriLink.IS is configured to your precise specifications. The system is ready to run. We can even preload your product recipes.

System Requirements

- Windows XP
- Windows 2000
- Windows NT4 (SP6 or later) OS
- P4, 28MB, Minimum 120MB drive space

Simple operator interface - Touch-screen-ready displays are based on feedback from users of our first-generation MetriLink.IS. These displays are designed to help the operator, not get into the way. Ease of use - the operator enjoys using the system.

Simple set-up - Recipes are stored in a database for an easy one-touch set-up. A password security system is included. There is no limit to the number of recipes.



www.metrillogic.com

203 Main Street Suite 189, Flemington NJ, 08822

Tel: 908.788.8180 • Fax: 908.782.0296 • E-mail: getinfo@metrillogic.com

