

Bar Inspection System - Grinding, Shaving, Milling, and Other Bar Processing

Bar Profile – All measurements are displayed in real time.

Xbar and Range of bundle – Show values for each bar.

Histogram of bundle is recalculated as bars accumulate.

Electronic versions of production and quality forms

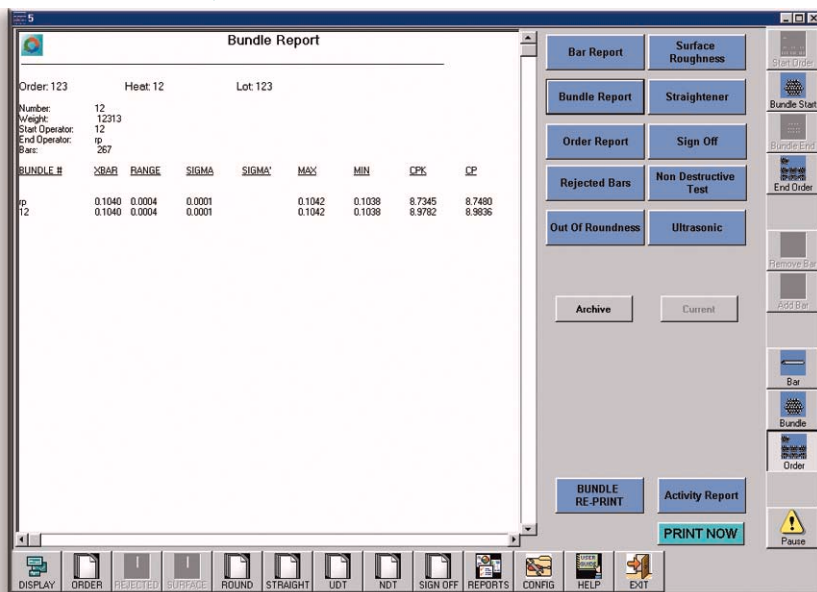
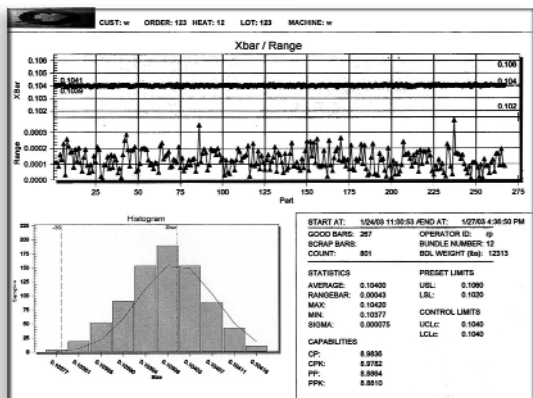
HIGH-OK-LOW
Reject on any individual reading



Start Order
Start Bundle
End Bundle
End Order

Statistics display for bar, bundle, and order

Printed Bundle Report



Bar Inspection System - Grinding, Shaving, Milling, and Other Bar Processing

Benefits

- Automatic SPC reports, production reports, and scrap analysis eliminate time/labor spent collecting and organizing SPC data..
- SPC reports are self-generated and customer ready; all reports are archived and printable on demand.
- Operator views real-time displays that enable precise wear compensation adjustments to reduce scrap.
- Paper reports are replaced with on-screen forms; operation entered data is archived with SPC and production data.
- Data is saved to a database and is readily accessible to any authorized user.
- Elimination of manual data entry reduces errors and cost.

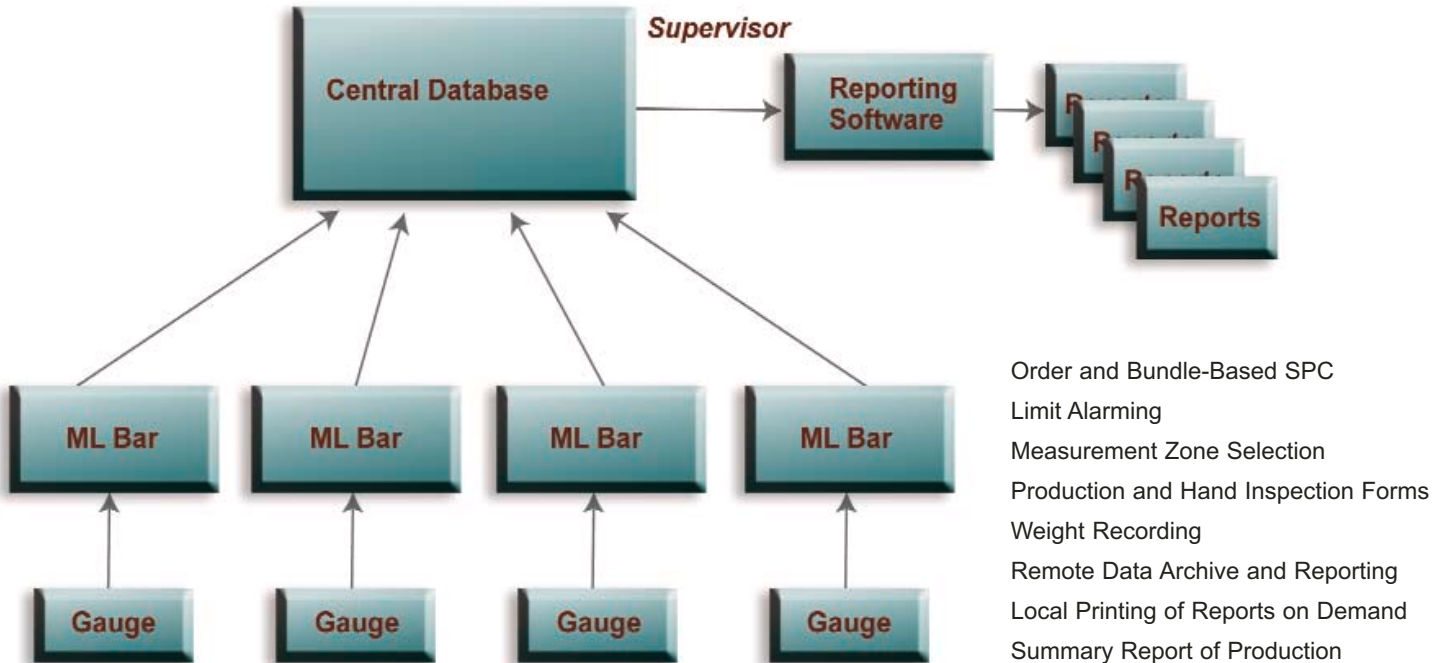
Features

- Complete package for bar reporting
- Built-in alarms and rejections
- Paperless report forms
- Data is automatically sent to database.
- SPC reports can be printed on demand.
- System interfaces with bar code readers and weigh scales.
- Easy to retrofit an existing system.
- Compatible with virtually all on-line diameter measurement systems.

Software

- MLBar runs on the plant floor, collecting and displaying measurements.
- MLBar Supervisor connects with each MLBar, providing overview and reporting tools.
- Customized packages, from software only to complete installations, including optical gauges, hardware, and network.

System Overview



Dual-Level System: Factory Floor and Supervisor

MLBar (factory floor – manufacturing cell)

- MLBar software, running on a PC, gathers input from a laser scanning gauge.
- MLBar accepts very high data rates, enabling high measurement resolution.
- Readings for each bar are displayed on a bar chart., enabling the operator to view the distribution patterns of the values to accurately determine and execute the adjustments needed to correct potential problems.
- Measurements from the bar are compared to alarm limits; if these limits are exceeded, the bar is rejected.
- Before values are incorporated into SPC reports, certain zones on the bar can be identified and ignored, thereby eliminating insignificant data from quality control reports.
- Product set-ups are stored in recipes to reduce the risk of operator error when switching products.

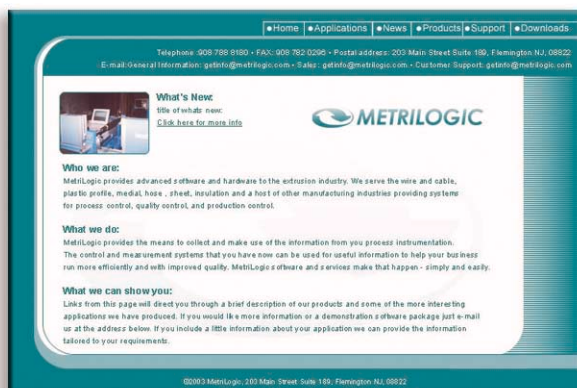
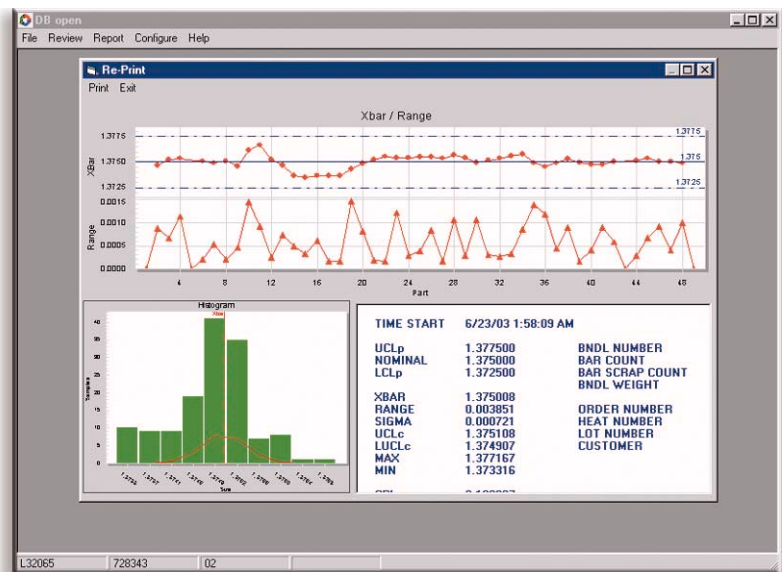
Bar Inspection System - Grinding, Shaving, Milling, and Other Bar Processing

Additional Charts and Displays:

- Histogram of all measurements for a given bar
- Trend chart displaying high, low, average diameter for each bar
- Cumulative histogram for each bundle
- Xbar/Range chart for each bundle.
- Cumulative histogram for each order
- Xbar/Range chart for each order

MLBar Supervisor

- Production information and scrap information at a glance
- Reporting software accesses saved data anywhere on the network.
- Multiple users can concurrently access saved data.
- A wide range of options for reprinting SPC Reports and Operator Forms.
- Summary Reports provide composite graphics displaying data based on time, work center, customer, order number, and other selections.



www.metrilogic.com

203 Main Street Suite 189, Flemington NJ, 08822

Tel: 908.788.8180 • Fax: 908.782.0296

E-mail: getinfo@metrilogic.com